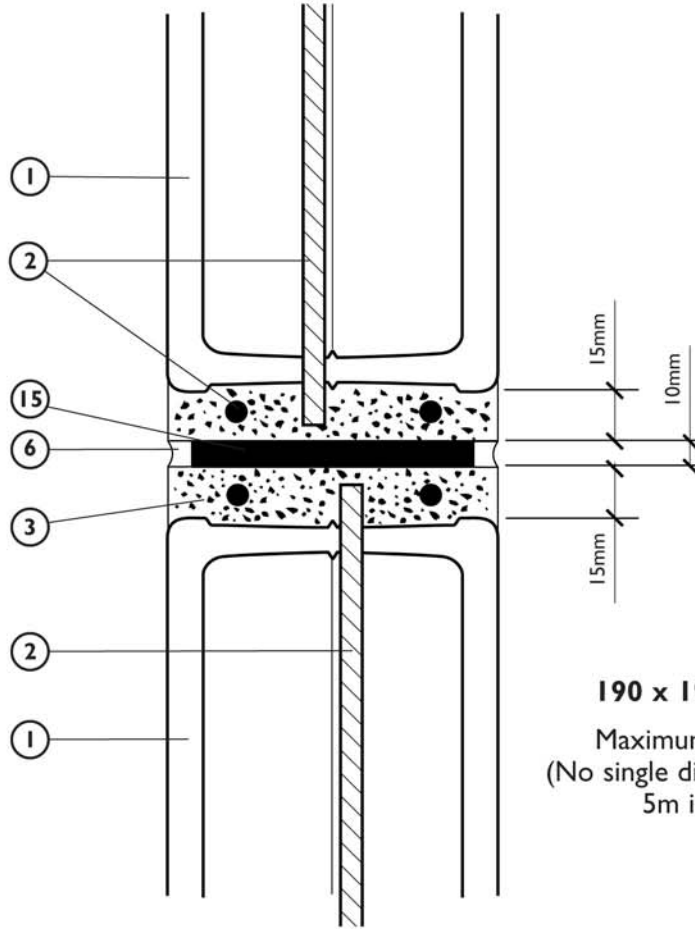
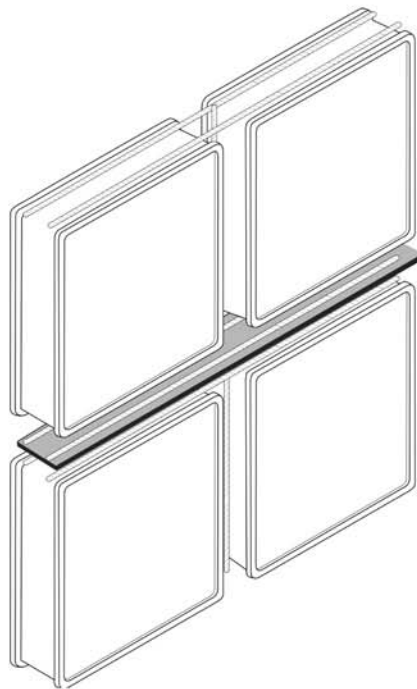


PLAN



190 x 190 x 80mm block

Maximum panel size = 25m²
(No single dimension should exceed 5m in any direction)



KEY :

- ① Glass block
- ② Reinforcement Rod
- ③ Colmef Vetromix Mortar (also for grout finishing)
- ⑥ Silicon Sealant
- ⑮ Bitumen Expansion material

DRAWING TITLE :

MORTAR FIXING DETAIL

GLASS BLOCK FIXING - INTERMEDIATE HORIZONTAL EXPANSION JOINT

NOTES

1. Drawing not to scale. For information purposes only.

This drawing may not be reproduced or made use of unless expressly agreed by Glass Block Technology Limited.

DRAWING No.

GBT/0010